

FIBRE CEMENT BOARDS

Size: 3000mm*615mm*15mm

SA-001



SA-002



SA-003



SA-004



SA-005



SA-006



SA-007



SA-008



SA-009



SA-010



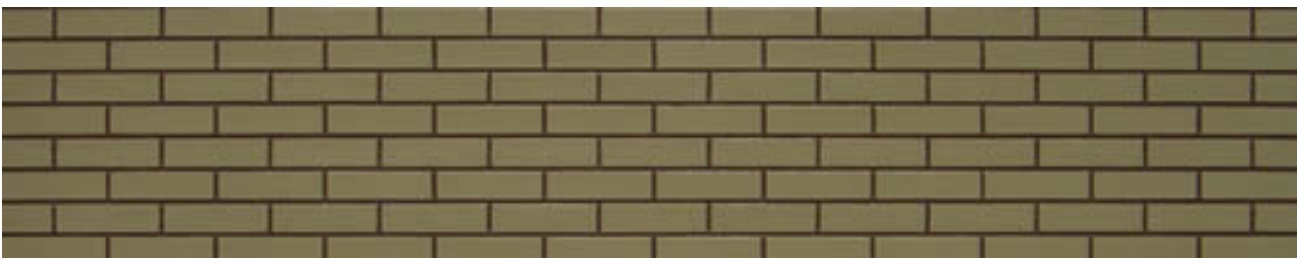
SA-011



SA-012



SA-013



SA-014



SA-015



SA-016



SA-017



SA-018



SA-019



SA-020



SA-021



SA-022



SA-023



SA-024



SA-025



SA-026



SA-027



SA-028



SA-029



SA-030



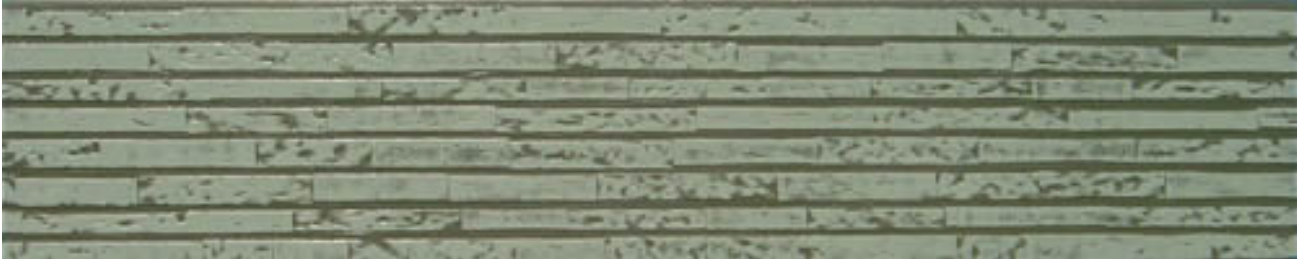
SA-031



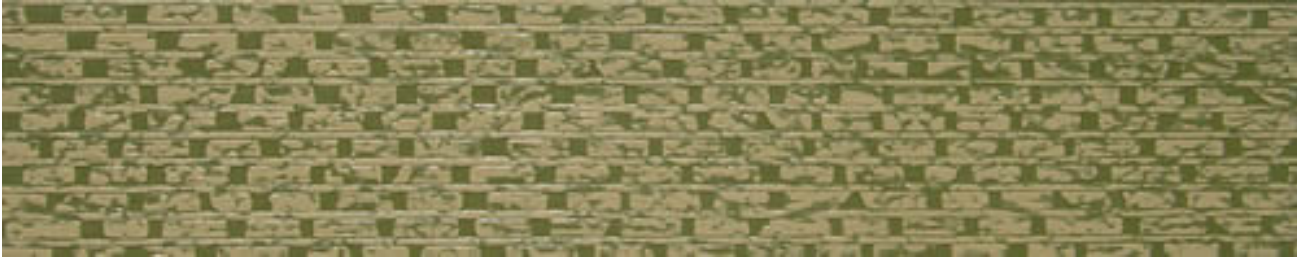
SA-032



SA-033



SA-034



SA-035



SA-036



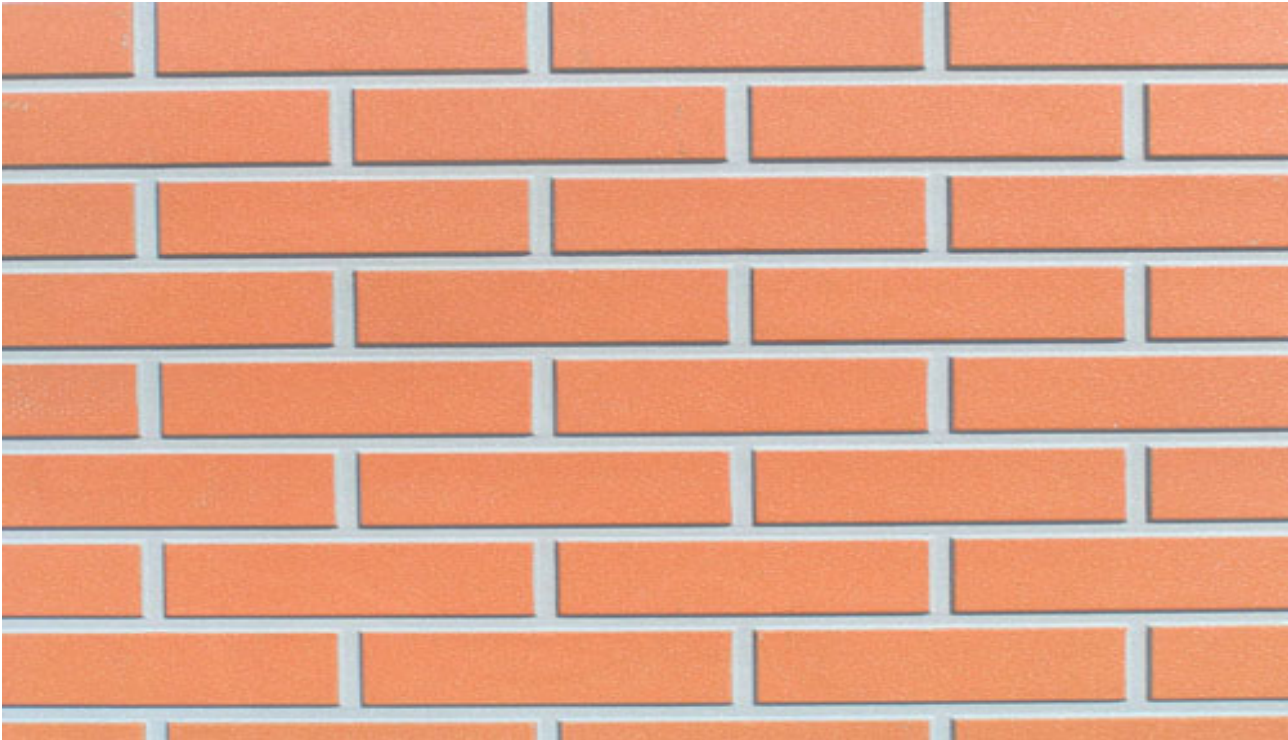
SA-037



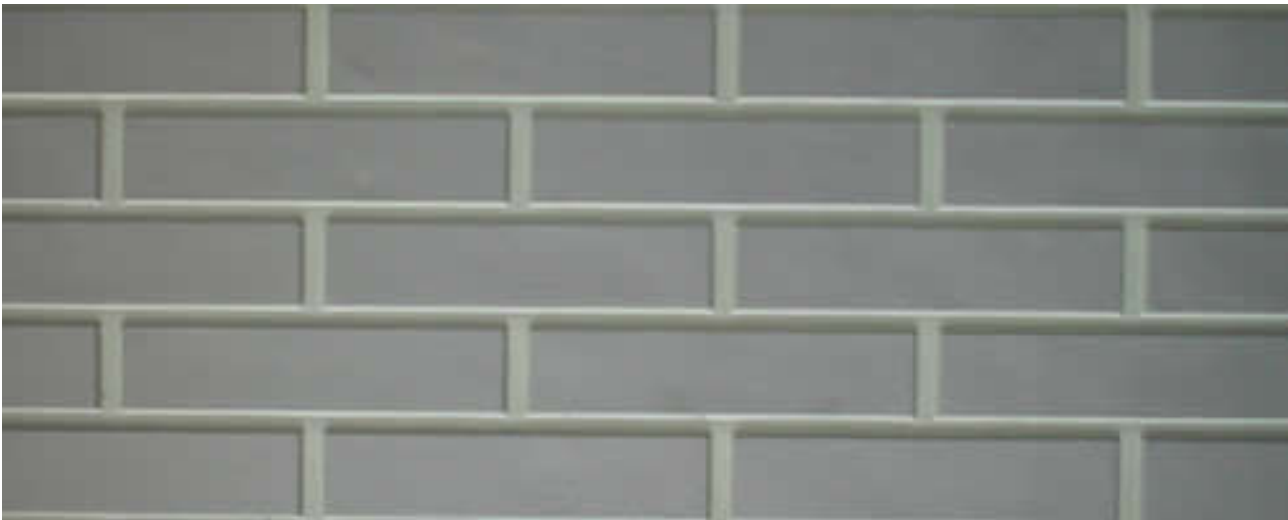
SA-038



SA-039



SA-040



SA-041



SA-042



SA-043



SA-044



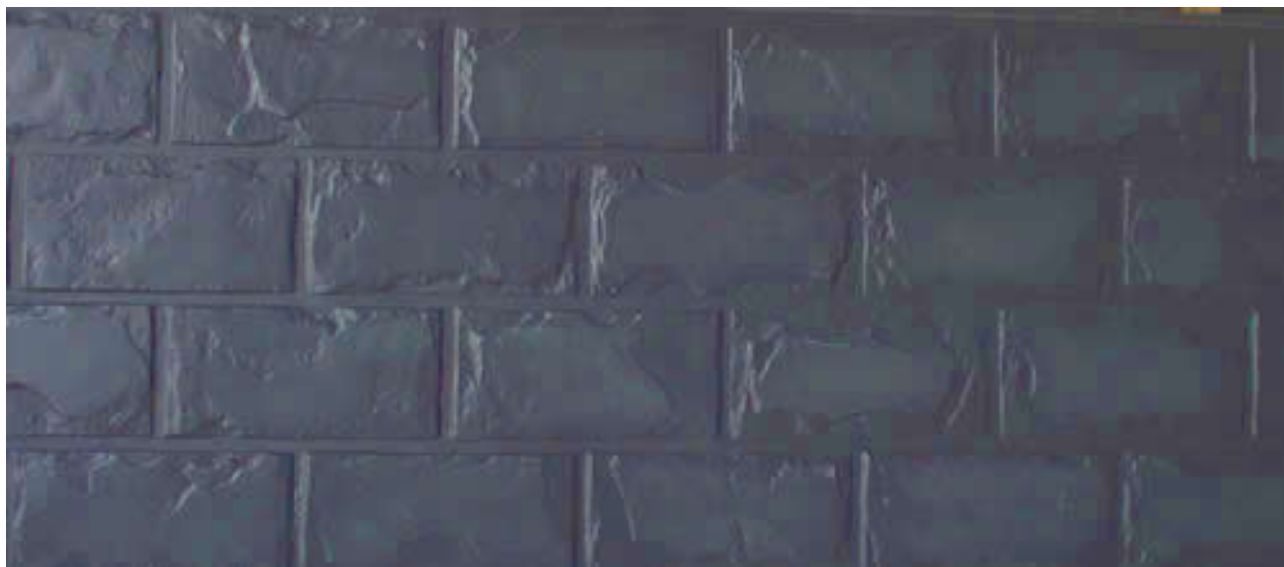
SA-045



SA-046



SA-047



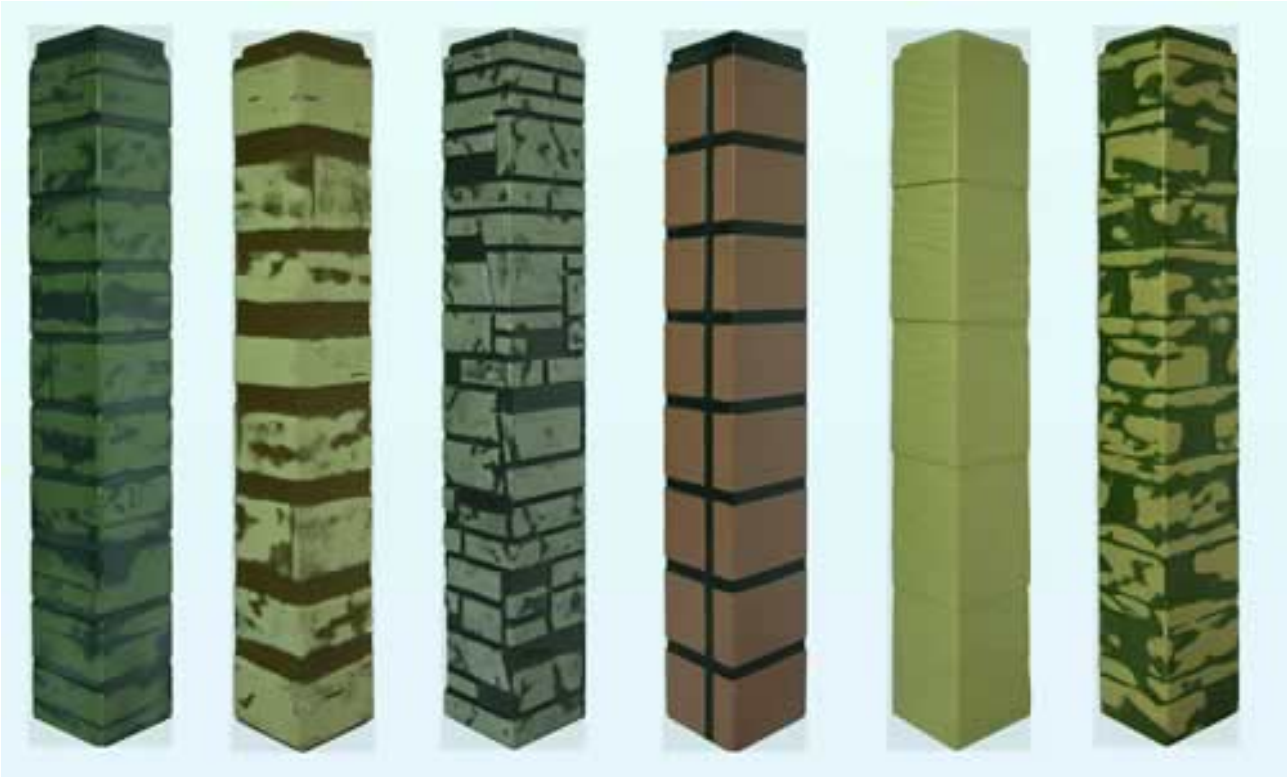
SA-48



SA-49



OUTER CORNER



PERFORMANCES

1. CLIMATE RESISTANCE

These panels could be exposed to bad climates such as scorching hot weathers and rain etc.

2. DURABILITY

It adopts a special approach of hardening the panel in a pot with high temperature and pressure. After this process, the deformations (such as shrinkage caused by dryness, the expansion caused by the heat etc) disappeared completely.

3. MOUSE & INSECT PROOF

This panel, after the research of many years, adopts special technology to decrease and prevent from the harm to human health.

4. FIRE PROOFING

'The exterior wall decorative panel with superior fire resistance properties and will not cause the crack, cast or chap due to the fire.

5. GREEN & SAFETY

All of the products are 100% asbestos free.

6. SOUND INSULATION

The decorative panel has good sound insulation performance, could even compare with that of double layer windows of buildings. The noises caused by the airplanes, cars, and various noises in residential area can be reduced greatly.

7. RESISTANCE TO IMPACT

The panel contains plant and wood fiber in it, so it has the fine tenacity, aging resistance and impact resistance.

TECH DATA

Main technical index

Detect items	Index
Folding strength under the natural humidity conditions (Mpa)	> 9
Fold strength after being dipped in water for 24 hours (Mpa)	> 8.5
Drying shrinkage	≤ 0.06%
Tensile strength on the vertical plane Mpa	≥ 0.5
Resistance to impact (500g hammer weight , 12mm board thickness)	Dropping from 1 , 100mm meter , and has no penetrating cracks
Anti-folding elastic modulus Mpa	> 3000
Density (T/M3)	1.1-1.4
Expansion coefficient (%) after being dipped in water for 24 hours	< 1.5
Fire resistance	B1 level
Moisture content (%)	10 ± 5
Clutching nail force	> 600
Heat conductivity factor (w/m.k)	0.101 (density) 1200kg/m3)
Surface water resistance	No change within 96 hours
Surface alkali fastness	No change within 48 hours
Surface washing fastness	≥ 5000 times
Surface aging resistance	No change within 1000 hours
Contamination resistance	< 15%
Sound insulation value	36dB (single board)
water absorption bend	Bend less than 3mm after water absorption
Water absorption	25%
Bond strength in cyclic test under the damp condition N/mm2	≥ 0.3
Thickness expansion after the cyclic test under the damp condition %	1.5%
Outdoor irradiation	> Has no change, crusting, no spilling within 250 hours
-40℃	The size and surface do not change after being frozen
Distortion performance under the wind pressure	Third level
Anti seismic within the distortion performance in the plan	First level

PROJECTS







CHINA NATIONAL ELECTRIC WIRE & CABLE IMP/EXP CORP.
TEL: +86 10 6760 1599 FAX: +86 10 6765 2959 E-MAIL: Tony.lgq@gmail.com